



# INNOVATION CHALLENGE

Executing body  LAGOS  
INNOVATES

# LSETF INNOVATION CHALLENGE

LSETF is proposing to host an Innovation Challenge to explore possible solutions to combating the challenge of youth unemployment.

The Innovation Challenge will

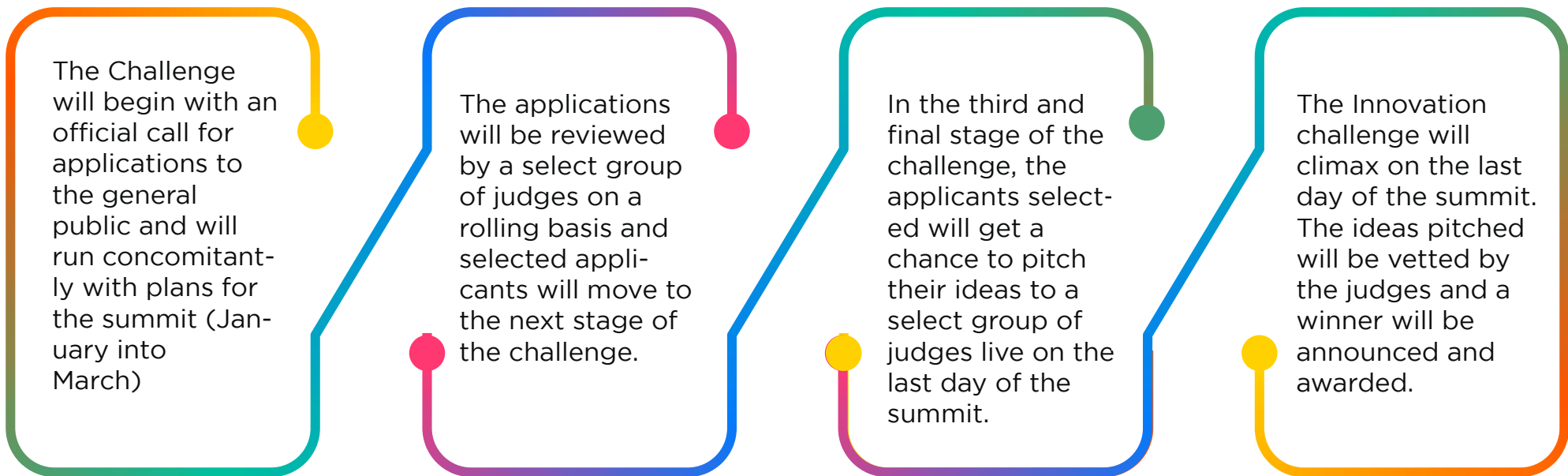
Create an avenue for individuals and groups to come up with technology driven solutions that can facilitate sustainable job creation strategies.

Create a platform for existing technology-based businesses to showcase their products that have potential to create sustainable jobs and reduce unemployment rates.

Serve as a platform through which LSETF can explore more options and possible solutions to creating employment and entrepreneurship opportunities.

Foster innovative thinking and ideation for better processes and products for sustainable job creation and employability.

## WORKFLOW







## MODE OF APPLICATION

Applicants will submit their applications via Google forms or via a dedicated email address. Open period for application is 1 month. Applications after this period will not be considered.



## SELECTION CRITERIA

Selection criteria include originality and feasibility of ideas, sustainability, adherence to application rules amongst other things.



## JUDGES

Judges will be selected based on availability and fit. Judges will vet successful applicants in the second and final stage of the challenge.

